



Hygiena® SpotCheck Plus

Glucose & Lactose Detection Test for Surfaces

Product No. GL100 (100 tests)

Introduction

Description and Intended Use

Hygiena® SpotCheck Plus devices are easy-to-use, non-instrument-based hygiene surface tests for monitoring surface cleanliness. SpotCheck Plus tests can detect the presence of D-glucose down to 2.5 μ moles and lactose down to 5.0 μ moles on a surface in 60 seconds. Glucose is present in 85% of food items, and lactose is a key component of all dairy products, making SpotCheck Plus devices suitable for monitoring surface hygiene in most environments where food is processed. SpotCheck Plus tests will turn from clear to green if glucose and/or lactose are present in the sample. The more glucose and lactose collected in a sample, the quicker and darker the color change.

Important Tips and Notes Before Starting the Test

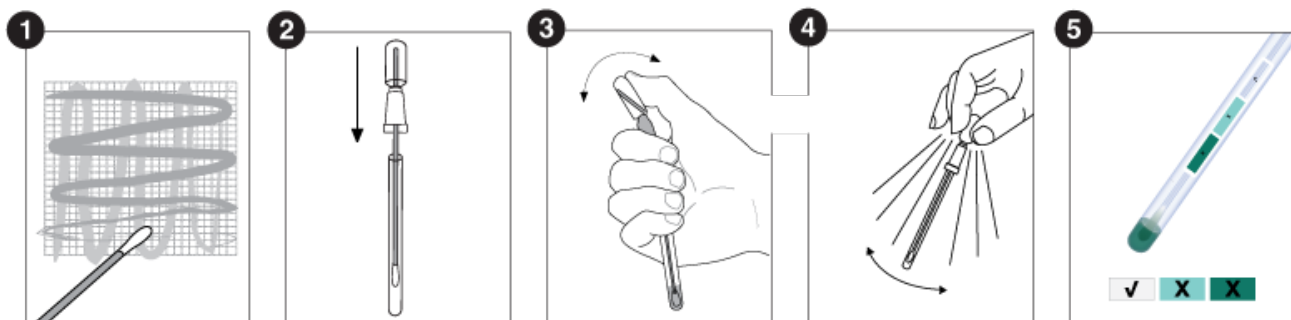
Allow SpotCheck Plus devices to equilibrate to 20 to 25 °C (room temperature) before use.

Test Procedure

1. Holding the swab tube firmly, twist and pull the top of the swab out of the tube. Then, thoroughly swab a standard 10 x 10 cm (4 x 4 inch) area for a typical flat surface.

Important swabbing technique tips:

- a. Apply sufficient pressure to create flex in the swab shaft.
 - b. Swab in a crisscross pattern vertically, horizontally and diagonally in both directions.
 - c. Rotate the swab while collecting the sample to maximize sample collection on the swab tip.
 - d. For irregular surfaces, ensure the swabbing technique remains consistent for each test and swab a large enough area to collect a representative sample.
2. Place the swab back into the swab tube.
 3. To activate the device, hold the swab tube firmly and use your thumb and forefinger to break the Snap-Valve by bending the bulb forward and backward. Squeeze the bulb twice to expel all the liquid down the swab shaft.
 4. Bathe the swab tip in the liquid by shaking for 5 seconds.
 5. Wait 1 minute, then compare the color of the reagent to the color chart on the tube label and record the result. Refer to Interpretation of Results below.





Additional Information

Interpretation of Results

Results will be ready after 1 minute. If no color change occurs after 2 minutes, the test is negative, and the device should be discarded.

| Color | Result | Interpretation and action |
|-------------|---------|---|
| Clear | Pass | Clean: no further action is required |
| Light green | Caution | A small amount of residue is present: Repeat testing, rinsing or cleaning, based on your protocol |
| Dark green | Fail | Not clean: Repeat cleaning and testing |

Calibration Control

It is advisable to run positive and negative controls according to Good Laboratory Practices. Hygiena offers the following instrument control: Positive Control Kit (Product No. CK25).

Storage and Shelf Life

- Do not use past the expiration date on the label.
- Store at 2 to 8 °C (36 to 46 °F) to maximize shelf life. Do not freeze.
- For convenience, devices may be stored at 9 to 22 °C (48 to 72 °F) for up to 4 weeks.

Disposal

SpotCheck Plus devices may be discarded in the trash.

Safety and Precautions

- Components of SpotCheck Plus devices do not pose any health risk when used in accordance with standard laboratory practice and procedures in this insert.
- SpotCheck Plus devices are for one-time use. Do not reuse.
- For further safety instructions, refer to the Safety Data Sheet (SDS), available at www.hygiena.com/sds.

Hygiena Liability

Hygiena will not be liable to the user or others for any loss or damage, whether direct or indirect, incidental or consequential, from use of these devices. If this product is proven to be defective, Hygiena's sole obligation will be to replace the product or at its discretion, refund the purchase price. Promptly notify Hygiena within 5 days of discovery of any suspected defect and return the product to Hygiena; contact Customer Service for a Returned Goods Authorization Number.

Contact Information

For more information, visit www.hygiena.com/contact. For technical support, visit www.hygiena.com/support.