

BAX® System Q7 Software Features and Instructions

Introducing BAX® System Q7 Software Release Version 4.0.1326 for WIN10 ONLY

BAX® System Q7 software release v4.0 contains an updated MATLAB engine for data analysis and new SDS equipment driver for the operation of the Q7 instrument and User Interface.

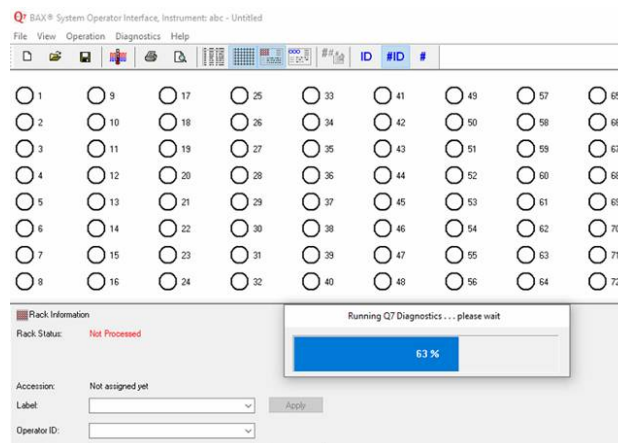
We strongly recommended that you always install the most recent version as soon as possible for optimal performance. Versions are available for download on the Hygiena Website.

If you currently have a WIN7 computer system, please contact diagnostics.support@hygiena.com or your local Hygiena™ representative for upgrade support, **this release is NOT applicable for WIN7 systems.**

Software Updates and Features for Release v4.0.1326 for WIN10 ONLY

- **Mathematical Engine Used for Result Interpretation Updated:**
 - MATLAB 2010 to MATLAB 2020 for continued integration of machine learning
 - Removal of Pipe Creation Error
 - Validation across all assays proved no changes in critical results or analysis
- **SDS Equipment Driver Improved:**
 - RPC Server error frequency reduction by improving communication pipeline
- **User Interface Enhancements:**
 - Print feature to allow overlaid individual well report to include the details of the selected wells on subsequent pages for full 96 rack results
 - Users can now include up to 23 alphanumeric characters with the autonumbering feature during rack creation
 - Report Q7 serial number when the instrument starts in the software about screen
 - Remove Target Version from the About dialog to avoid confusion of software version
 - Allow the user to cancel Analysis
 - Calibration status reports
- **Additional Software Features:**
 - During application launch, a self-diagnostics test is performed (Figure 1)
 - Improved logging of software and hardware diagnostics
 - Added option to upload SDS and application errors to Azure cloud during software installation

Figure 1: Self-diagnostics test upon application launch



Software Installation Instructions for WIN10 ONLY

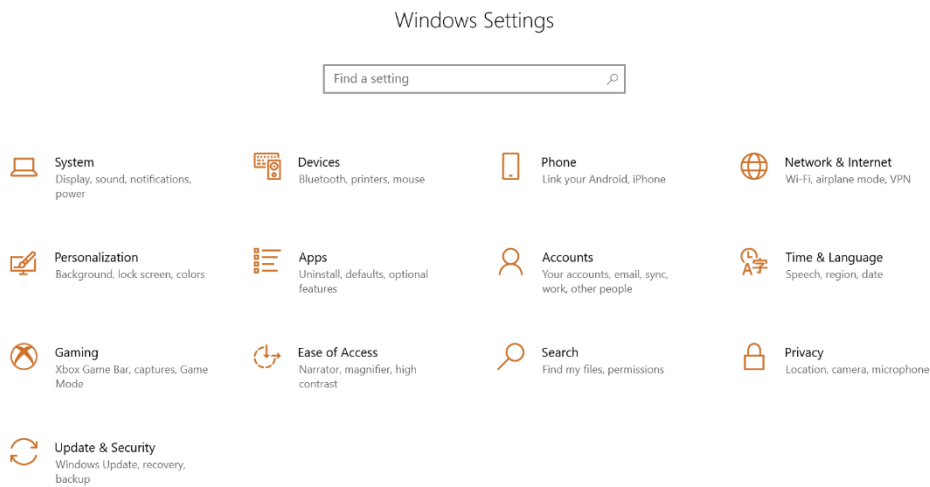
Each release of BAX® System software builds on improvements from previous versions, it is strongly recommended that you always install the most recent version as soon as possible for optimal performance.

1. Back up the system's calibration file

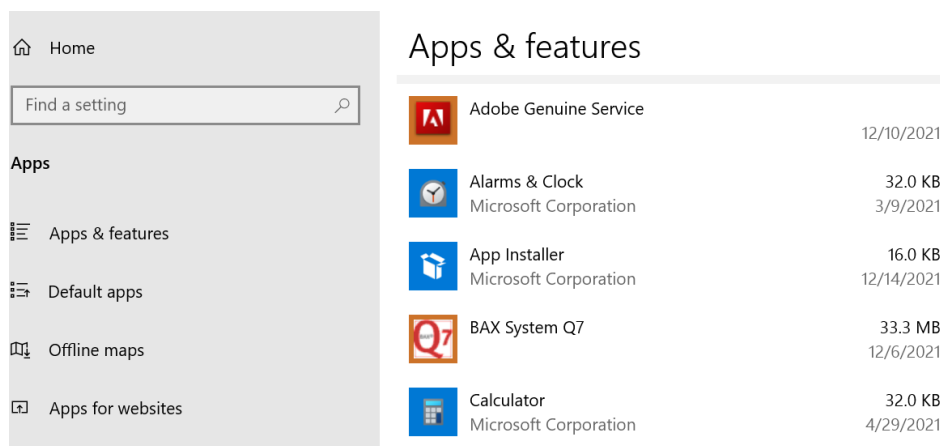
- Selecting OPERATIONS > BAX® MAINTENANCE > EXPORT CALIBRATION from the menu bar
- Navigate to a new folder in which to store the backup file and click "Save"
- Name the calibration file (example: "Q7Cal_date.bqc")

2. Uninstall the previous version (REQUIRED)

- Navigate to Windows Settings and select Apps



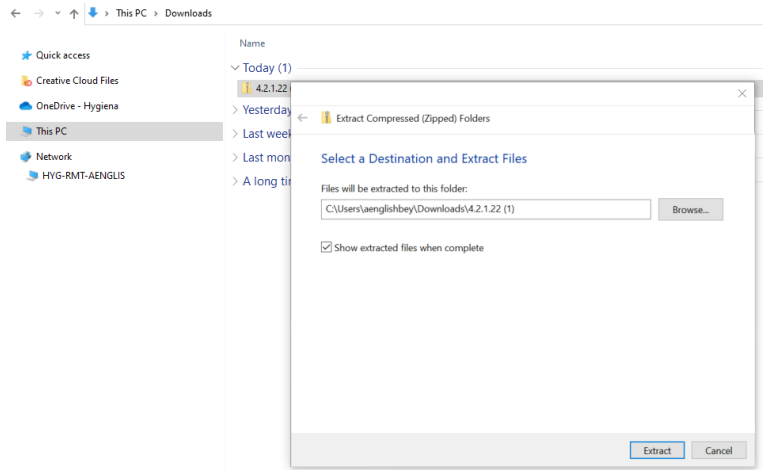
- Click on BAX System Q7, select uninstall, and agree (click yes) on next window to initiate removal



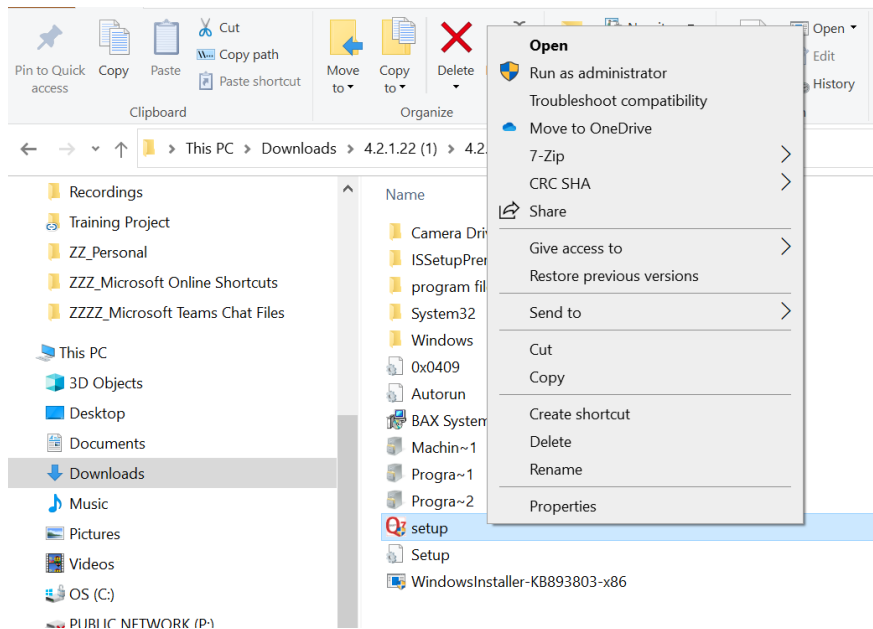
- **Restart Computer** and continue to step 3

3. Download 4.0 Software by clicking this [link](#) or the button from the [BAX® Q7 Page](#)

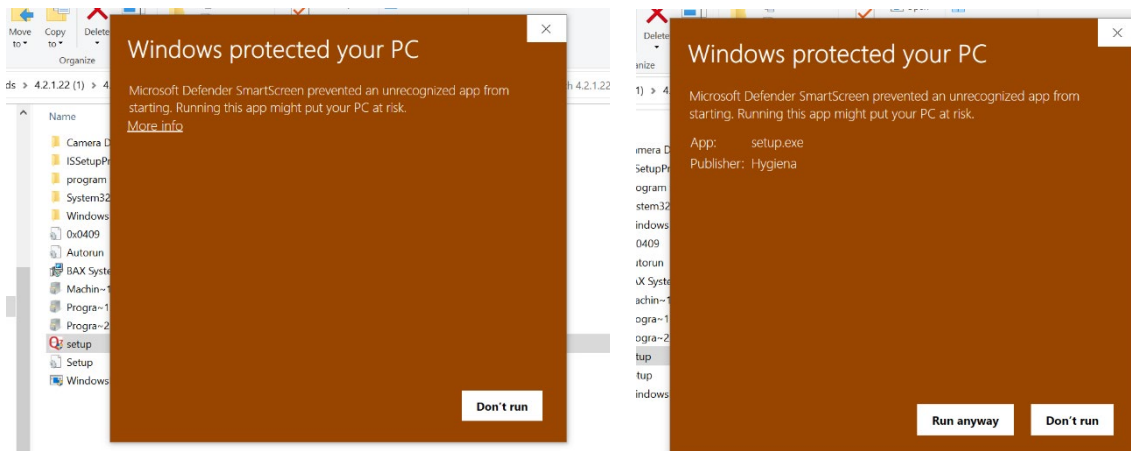
- Extract the files from the zipped folder
 - Transfer extracted to a memory/USB stick if computer doesn't have internet access



- Right click the setup program and click run as administrator

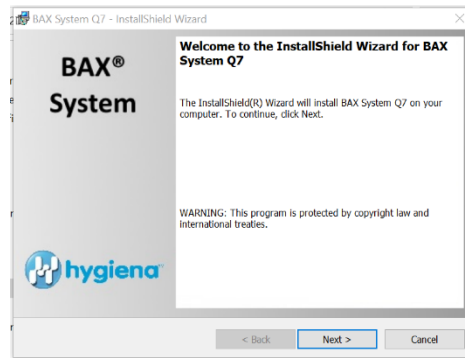


- A windows protect screen may pop-up, select “More Info”, then select “Run Anyway”.
- On the next pop-up, select “Yes” to allow install to begin

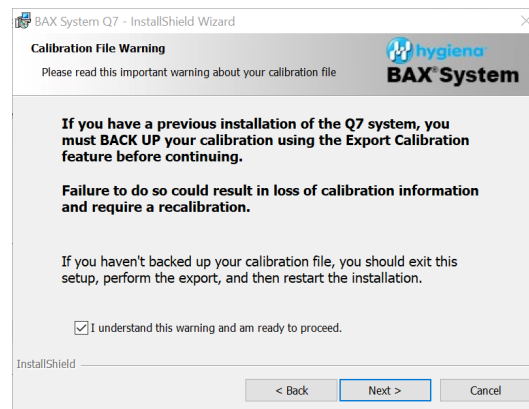


4. Read the prompts carefully. Choose the default responses.

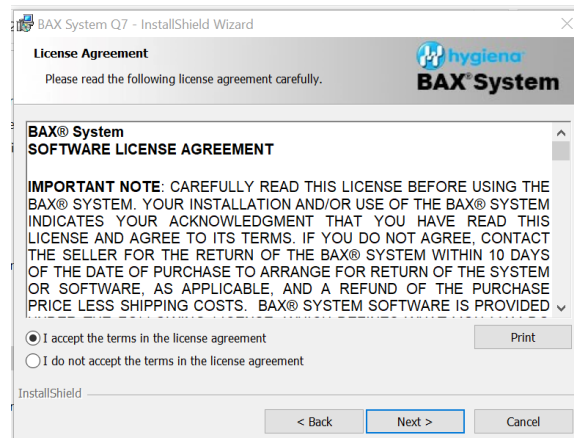
- **Welcome Window** – Click Next



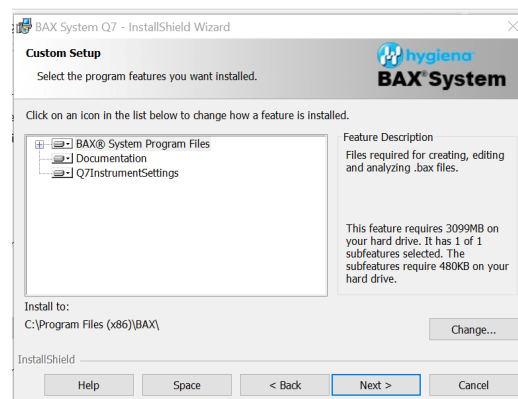
- **Calibration File Warning** – ENSURE YOU HAVE BACKED UP THE CALIBRATION FILE – Check box and click Next



- **License Agreement** – Check “Accept Terms” box and click Next



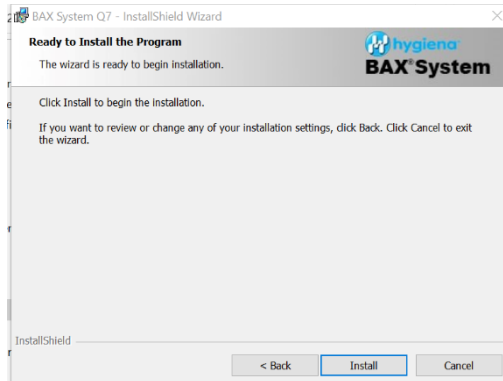
- **Custom Setup** – Click Next



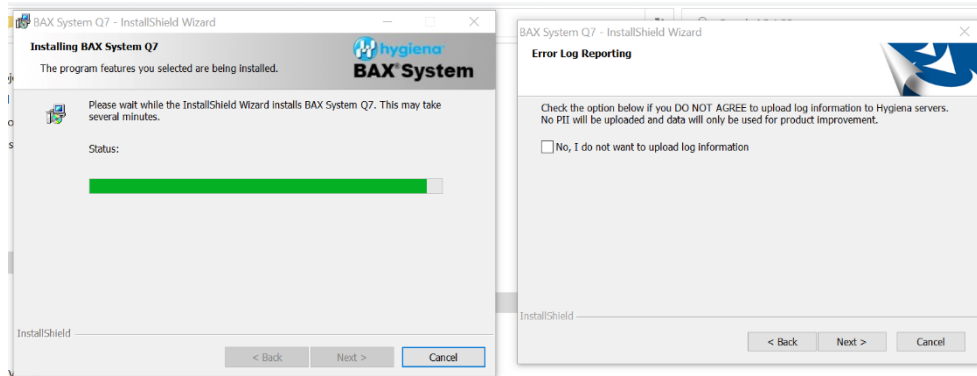
- **Password Protection** – BAX default is disabled password, choose option for your lab, then click Next



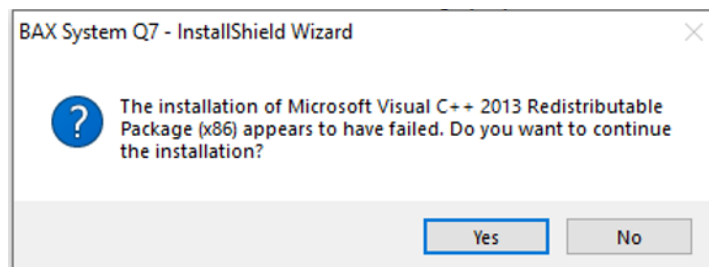
- **Ready to Install Program** – Click Install



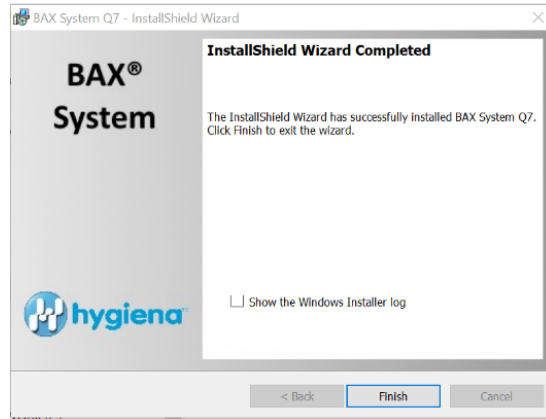
- Installing BAX System Q7 – During installation an Error Log Reporting window will pop-up, we recommend NOT checking the box to be able to collect software and/or hardware errors in the Log Files to assist Diagnostics Support in troubleshooting. However, please review and decide what is appropriate for your lab
 - Select Next to complete install



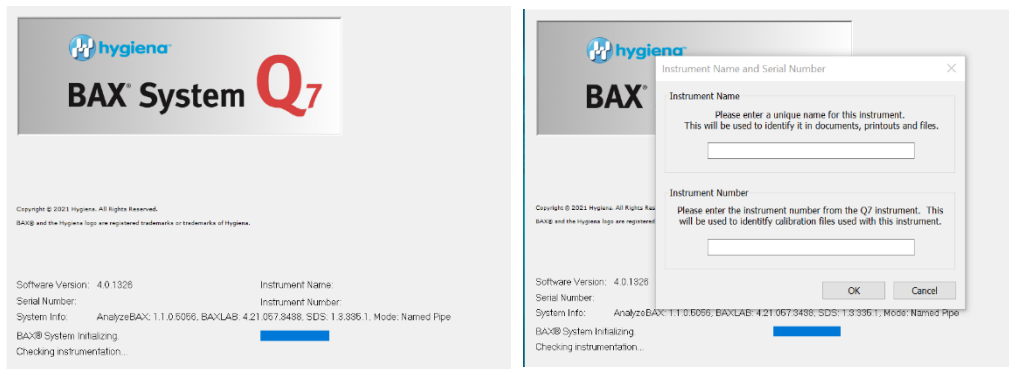
- Depending on your current version of software, additional packages may need to be updated during the install, please click “Yes” if any pop-ups occur



- **InstallShield Wizard Complete –Select Finish**



- Click on the desktop icon to initiate program, new open screen will have Software Version: 4.0.1326
- Enter Instrument Name and Serial Number – This will appear on reports and should be utilized



5. Import system's calibration file

- From the menu bar, select DIAGNOSTICS > CALIBRATION to open the Q7 Calibration Diagnostics window
- Click the check calibration button to determine the status of your calibration files
 - Import the backed-up calibration file by selecting OPERATIONS > BAX® MAINTENANCE > IMPORT CALIBRATION from the menu bar and selecting the backed-up calibration file from step 1

6. Ready to perform BAX® System Analysis

- Define proper targets that are used in your lab by selecting VIEW > SELECT TARGETS > then in window use arrow buttons to move targets from define in system to available for selection window

